



COMPANY PROFILE

Who we Are

Imoth insurance Brokers is a financial services private limited company registered under the companies Act of Kenya. We are an insurance intermediary providing convenient and comparative services for the insurance services sector to consumers in Kenya.

Vision

To become the leading insurance intermediary firm, while delivering service that consistently exceed international standards and provide exceptional customer satisfaction. To continually deliver excellent value & innovative insurance solutions to meet our clients' requirements. Using modern principles and efficiency

Mission

To be a leading insurance intermediary in the global market.
To become the customers' most preferred choice by attaining excellence in quality and timely completed value added services.
To provide the highest level of service in the insurance industry while offering superior solutions to every service, we handle.



MANAGEMENT



WALTER OKOTH OMONDI

Director

Experience: 15 Years

Education - Bachelor of Science(Actuarial Science with IT), Maseno University

Professional Qualifications - African Insurance Distribution & Banc assurance Conference



IMMACULATE WANGARI MAINA

Director

Experience: 15 Years

Education - Bachelor of Business Management Insurance and Risks Option, Moi University

Professional Qualifications- Diploma in Insurance (Associate) - AIK (Association Of Insurance Institute of Kenya)



REUBEN CARLTON OKAL

Sales and Marketing Manager

Experience: 6 Years

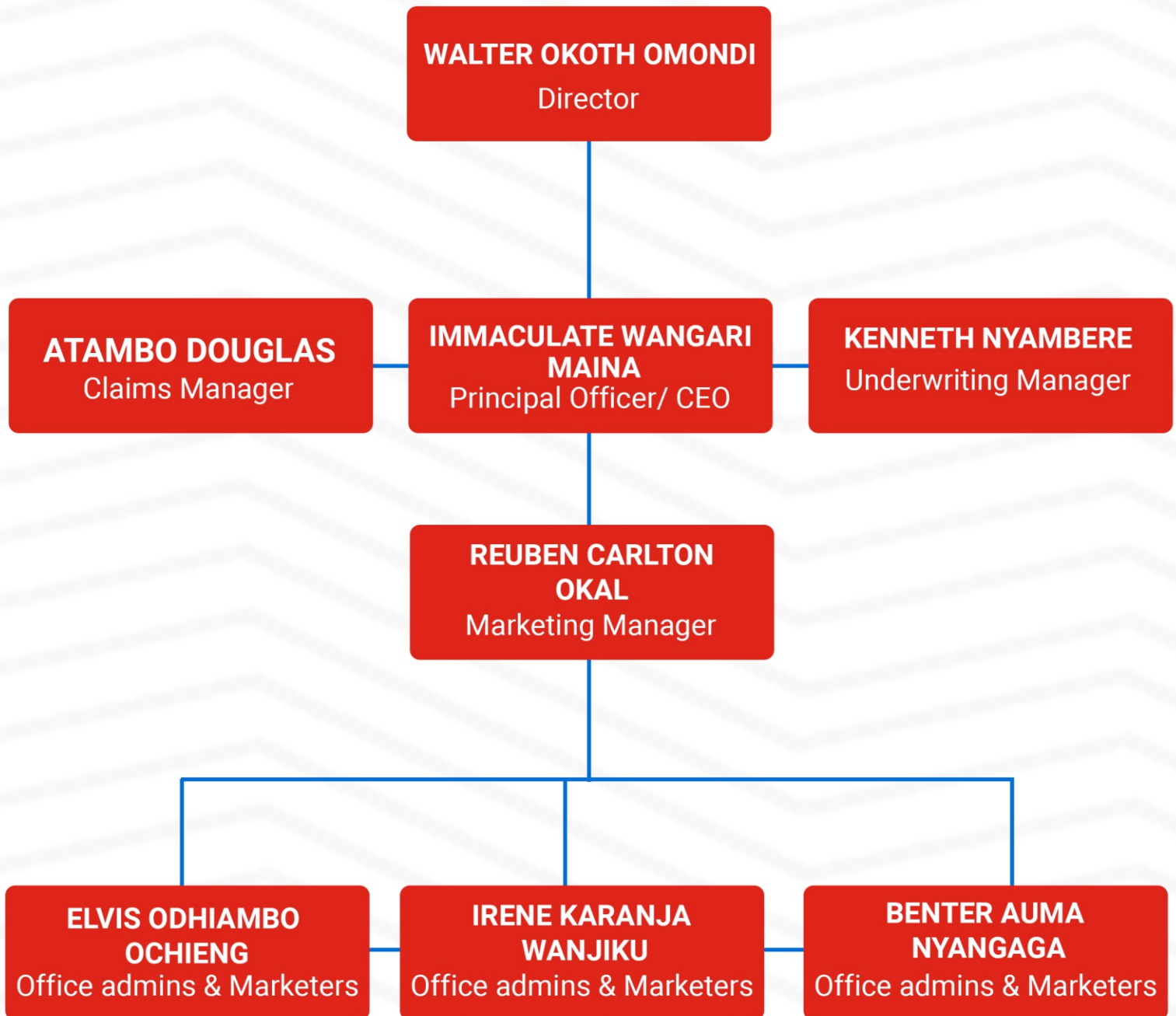
Education - Bachelor of Commerce (Actuarial Science option), Kenyatta University

Professional Qualifications Certificate of Proficiency



COMPANY PROFILE

Organization Structure



WIBA INSURANCE

The WIBA policy covers any occupational illness and accidents during the course of employment, including medical expenses and loss of wages for either body injury or the death of an employee as per the WIBA Act 2007. The WIBA 2007 was enacted to compensate employees for work related injuries and diseases contracted in the course of their employment and requires that employers obtain and maintain insurance in respect of liabilities incurred under the Act. WIBA is designed to provide this this cover as an employer's liability under the Act.



COMPANY PROFILE

MEDICAL INSURANCE INDIVIDUAL AND CORPORATE

The last thing you want when you or a family member is sick is the stress of trying to pay for medical expenses

With our Medical cover you can count on the support you need to stay healthier life without missing the important things in life.

Policy holder and their dependents are insured against the risk of incurring medical expenses as a result of accident or sickness.



Policy Limits

- Hospital bed accommodation charges (minus NHIF rebate amount)
- Pre existing conditions are declared and accepted
- Diagnostics for member and spouse
- Major organ transplant procedure
- In- patent prescribed physiotherapy, chemotherapy, radiotherapy, nursing care, prescribed drugs/medicine, dressing and diagnostic test.
- Non-accident maxillofacial and ophthalmologic, dental surgery subject to authorization.
- Day care surgery
- Resident mother/doctors fee





MOTOR VEHICLE INSURANCE

This policy covers risks ranging from Third Party Risks to comprehensive risks. Your policy cover will normally run 12 months and is renewable annually. Our insurance provides protection to all models of vehicles for use as social, commercial, domestic and pleasure purposes and is insured from road accidents, theft of whole or parts of the vehicle and legal liabilities arising from third party property damage or personal injury. This is with exception of use as PSV and Hire services



COMPANY PROFILE

OTHER PRODUCTS

- **Pension Insurance**
- **Marine Insurance**
- **Professional Indemnity**
- **Personal Accident**
- **Fire and Burglary**







Contact Us



0725 757 808 / 0759 642 797



insurance@imoth.co.ke



Salama House, 3rd Floor, Suite 305
Wabera Street, Nairobi, Kenya



INSURANCE BROKERS
INSURANCE | HEALTH | PENSION



IMOTH INSURANCE